

For Wojciech Jeliński

# SONATA / SONATE

## I. MODERATO CANTABILE E ESPRESSIVO

Ewa Fabiańska-Jelińska  
(2017)

Moderato cantabile ♩ = ca. 90

Tbn.

*mp*

Moderato cantabile ♩ = ca. 90

Pno.

*p*

8<sup>va</sup>-----

7

*mf*

(8<sup>va</sup>)-----

7

rit.

12

3

rit.

12

5/4

5/4

5/4

5/4

## II. KOŁYSANKA / LULLABY

Adagio cantabile ♩ = ca. 70

con sord.

Tbn.



*pp*

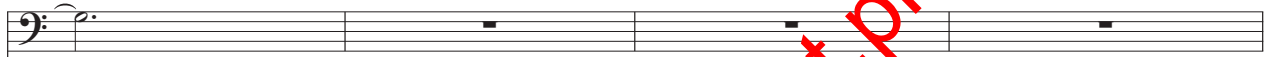
7



*mp*

13

Tbn.



13

Pno.



Ped.

17

Pno.



21

senza sord.

Tbn.



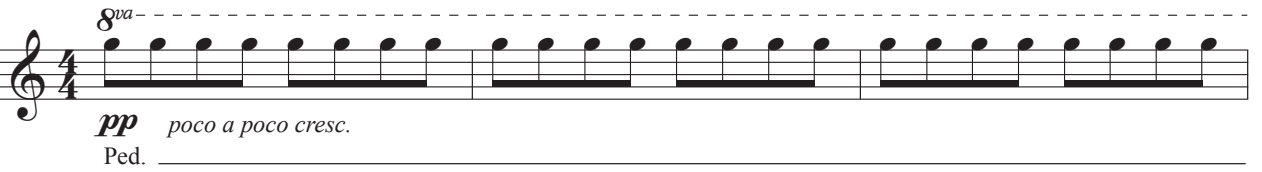
21

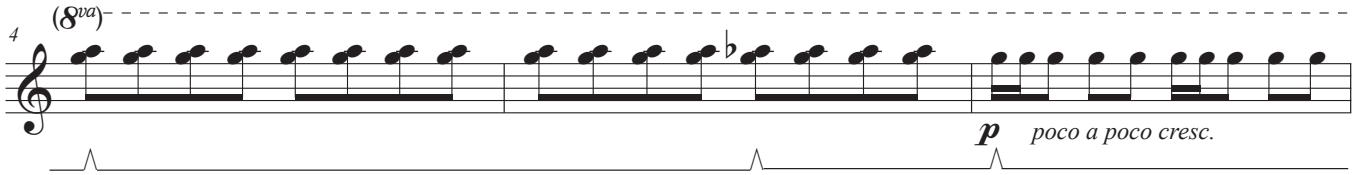
Pno.

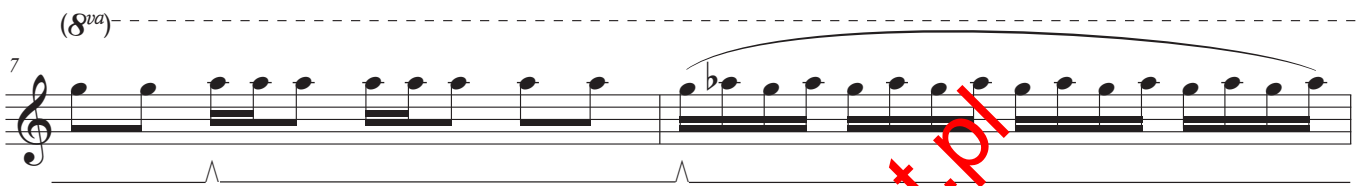


### III. ALLEGRO RISOLUTO

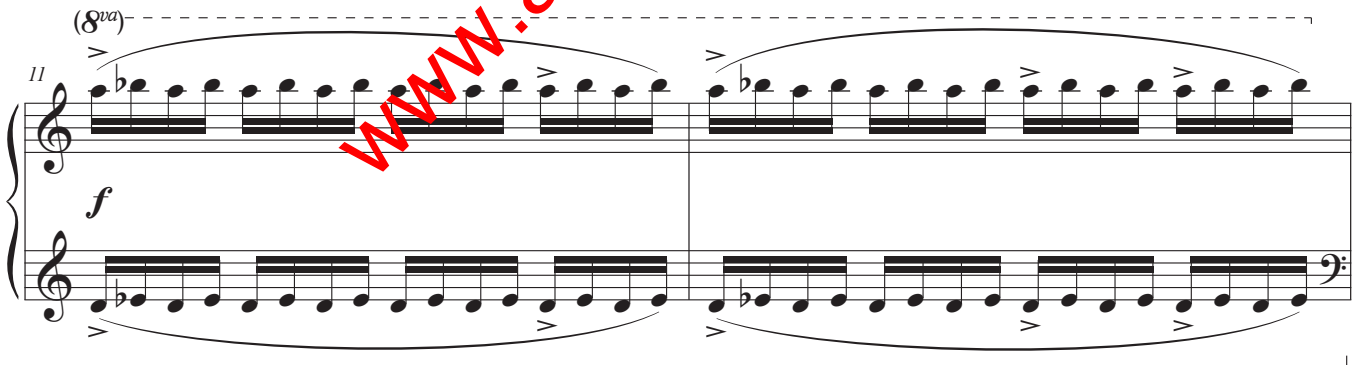
Allegro risoluto ♩ = ca. 110

Pno. 

4 

7 

9 

11 

Tbn. 13 

16 

19 

# IV. ALLEGRETTO GIOCOLO

Allegretto giocoso ♩ = ca. 65

Pno. *mf*

Measures 1-3 of the piano part. The right hand has rests, while the left hand plays a steady eighth-note accompaniment. Measure 3 features a melodic phrase in the right hand.

Measures 4-6 of the piano part. The right hand has a melodic line with slurs and accents, while the left hand continues the eighth-note accompaniment.

Tbn. *f*

Pno.

Measures 7-9. The trombone part (Tbn.) has a melodic line with slurs and accents, while the piano part (Pno.) continues with a steady eighth-note accompaniment.

Measures 10-12. The piano part (Pno.) features a melodic line in the right hand with slurs and accents, and a steady eighth-note accompaniment in the left hand. The right hand part (Tbn.) has a melodic line with slurs and accents.